

COLORBOND® STEEL

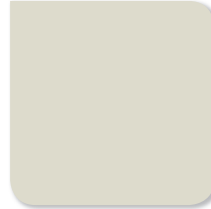
COLOUR VALUES AND TRADE MARK COLOUR NAMES



COLORBOND® steel range Roofing, walling, gutters, fascia and downpipes



CLASSIC CREAM™
CMYK 6 12 32 2
RGB 233 220 184
HEX E9DCB8



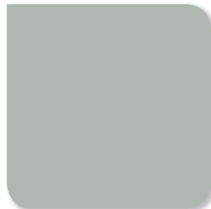
SURFIST® ©
CMYK 2 2 11 12
RGB 228 226 213
HEX E4E2D5



PAPERBARK®
CMYK 6 13 30 19
RGB 202 191 164
HEX CABFA4



EVENING HAZE®
CMYK 1 2 22 28
RGB 197 194 170
HEX C5C2AA



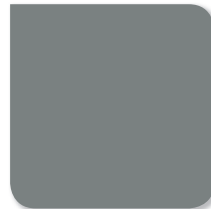
SHALE GREY™
CMYK 10 4 11 26
RGB 189 191 186
HEX BDBFBA



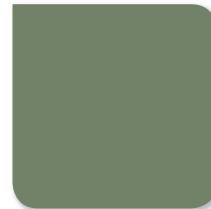
DUNE® ©
CMYK 30 25 32 8
RGB 177 173 163
HEX B1ADA3



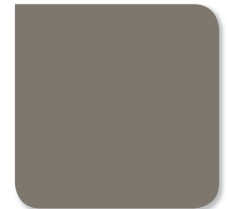
COVE™
CMYK 30 27 41 16
RGB 165 159 138
HEX A59F8A



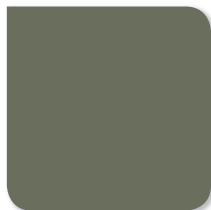
WINDSPRAY® ©
CMYK 25 15 19 43
RGB 136 139 138
HEX 888B8A



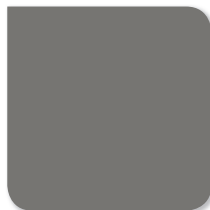
PALE EUCALYPT®
CMYK 55 35 60 14
RGB 124 132 106
HEX 7C846A



GULLY™
CMYK 40 38 44 26
RGB 133 126 115
HEX 857E73



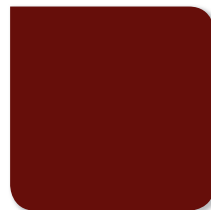
MANGROVE™
CMYK 48 36 54 32
RGB 115 117 98
HEX 737562



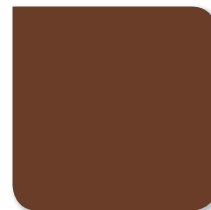
WALLABY™
CMYK 43 37 39 28
RGB 127 124 120
HEX 7F7C78



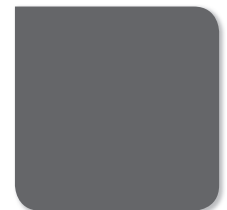
JASPER®
CMYK 50 50 60 33
RGB 108 97 83
HEX 6C6153



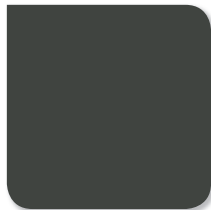
MANOR RED®
CMYK 32 97 100 51
RGB 94 29 14
HEX 5E1D0E



TERRAIN®
CMYK 30 66 76 51
RGB 103 67 46
HEX 67432E



BASALT™
CMYK 51 43 40 32
RGB 109 108 110
HEX 6D6C6E



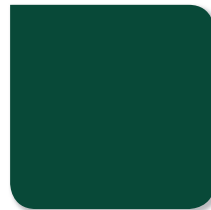
WOODLAND GREY®
CMYK 45 35 42 67
RGB 75 76 70
HEX 4B4C46



MONUMENT®
CMYK 24 18 14 90
RGB 50 50 51
HEX 323233



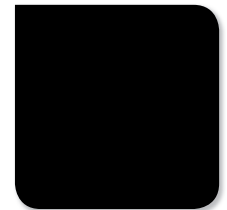
IRONSTONE®
CMYK 37 20 5 80
RGB 62 67 76
HEX 3E434C



COTTAGE GREEN®
CMYK 77 22 64 64
RGB 48 76 60
HEX 304C3C

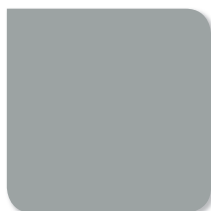


DEEP OCEAN® ©
CMYK 64 39 15 69
RGB 54 65 82
HEX 364152

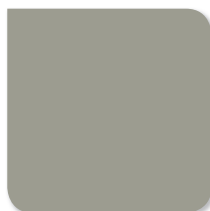


NIGHT SKY®
CMYK 75 65 40 100
RGB 0 0 0
HEX 000000

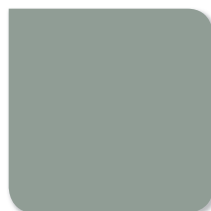
COLORBOND® Metallic steel range Commercial and industrial applications



CITI®
CMYK 38 27 29 5
RGB 166 169 168
HEX A6A9A8



AXIS®
CMYK 34 27 35 11
RGB 165 163 152
HEX A5A398



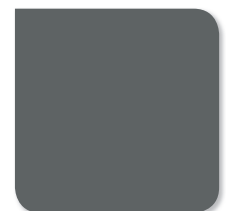
CONSERVATORY®
CMYK 40 24 35 11
RGB 156 163 154
HEX 9CA39A



SKYBRIDGE®
CMYK 58 30 29 10
RGB 123 145 157
HEX 7B919D



CORTEX®
CMYK 33 31 40 14
RGB 162 154 139
HEX A29A8B



FACADE®
CMYK 54 42 43 34
RGB 103 106 105
HEX 676A69

COLORBOND® STEEL

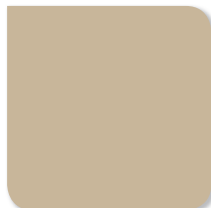
COLOUR VALUES AND TRADE MARK COLOUR NAMES



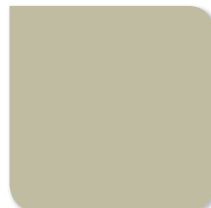
COLORBOND® steel fencing range



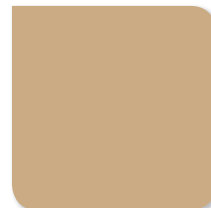
DOMAIN®
CMYK 6 11 37 3
RGB 232 219 174
HEX E8DBAE



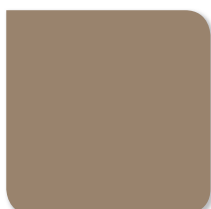
TERRACE®
CMYK 6 13 30 19
RGB 202 191 164
HEX CABFA4



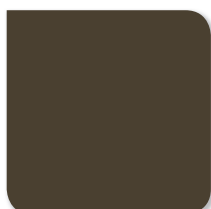
SUMMERSHADE®
CMYK 1 2 22 28
RGB 197 194 170
HEX C5C2AA



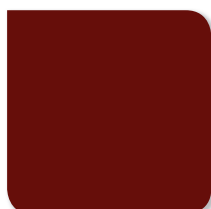
HARVEST®
CMYK 11 25 46 11
RGB 202 179 139
HEX CAB38B



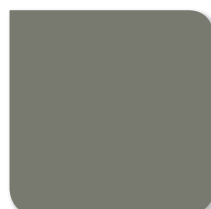
RIVERSAND®
CMYK 16 29 42 33
RGB 157 141 118
HEX 9D8D76



ESTATE®
CMYK 51 53 69 56
RGB 81 71 55
HEX 514737



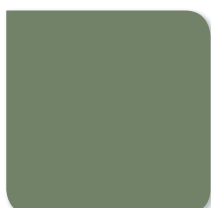
RED OAK®
CMYK 32 97 100 51
RGB 94 29 14
HEX 5E1D0E



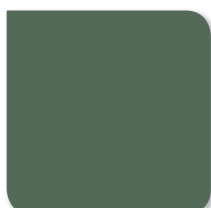
TEATREE®
CMYK 32 25 37 38
RGB 132 131 119
HEX 848377



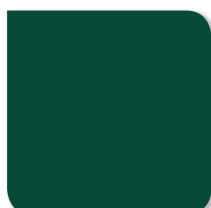
GREY RIDGE®
CMYK 45 35 42 67
RGB 75 76 70
HEX 4B4C46



MEADOW®
CMYK 55 35 60 14
RGB 124 132 106
HEX 7C846A



WILLOW®
CMYK 49 20 50 47
RGB 100 113 94
HEX 64715E



EVERGREEN®
CMYK 77 22 64 64
RGB 48 76 60
HEX 304C3C



HEDGE®
CMYK 50 24 37 61
RGB 80 91 87
HEX 505B57



BLUESTONE®
CMYK 64 39 15 69
RGB 54 65 82
HEX 364152

COLORBOND® Coolmax® steel



WHITEHAVEN®
CMYK 0 0 6 1
RGB 253 252 243
HEX FDFCF3

When reproducing COLORBOND® steel colours and ® and/or ™ colours in your communications, you MUST include the following footnote in the relevant communications:

The COLORBOND® steel colours shown here have been reproduced to represent actual product colours as accurately as possible. However, we recommend checking your chosen colour against an actual sample of the product before purchasing as varying light conditions and limitations of the printing process may affect colour tones. COLORBOND®, BlueScope and ® colour names are registered trade marks of BlueScope Steel Limited. ™ colour names are trade marks of BlueScope Steel Limited.

LEGEND

All colours in the COLORBOND® steel standard colour range are available in COLORBOND® Ultra steel for coastal and industrial environments. Please speak to your supplier for more information regarding availability.

☛ Also available in COLORBOND® Stainless steel for severe coastal and industrial environments. Please speak to your supplier for more information regarding availability.

The COLORBOND® steel colours shown here have been reproduced to represent actual product colours as accurately as possible. However, we recommend checking your chosen colour against an actual sample of the product before purchasing, as varying light conditions and limitations of the printing process may affect colour tones. Colour value conversions have been provided as a guide only to aid designers and homeowners to visualise products made from COLORBOND® steel in their projects and represent best match colour values for conventional printing and web based applications. To determine the most suitable material for your project, please contact your supplier or refer to steel.com.au/colorbond. COLORBOND®, BlueScope, the BlueScope brand mark and ® colour names are registered trade marks of BlueScope Steel Limited. ™ colour names are trade marks of BlueScope Steel Limited. © 2013 BlueScope Steel Limited ABN 16 000 011 058. All rights reserved.



10/15



9 3 2 0 0 7 5 0 7 5 1 9 4